



Carlton Primary School Newsletter

Carlton Primary School is a partner in the Carlton Learning Precinct
Supporting children and their families to succeed in life



Term One 2023
Newsletter #1

Dates to Remember

Term dates 2023

Term One

Jan 31st – Thurs April 6th

Term Two

Wed April 26th – June 23rd

Term Three

July 10th – Sep 15th

Term Four

Oct 2nd - Dec 19th

*April 24th and May 26th will be pupil free for staff professional learning and report writing

Wednesdays

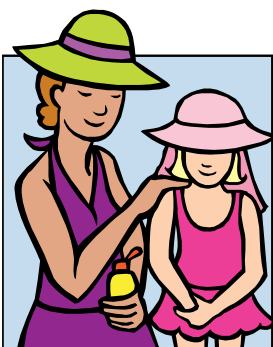
No school for Prep students on Wednesdays until after Labour Day

Monday February 14th

School Council Meeting—
3.30pm

March 7th—10th

Grade 4, 5 & 6 camp to
Queenscliff



We acknowledge Traditional Owners of Country and recognise their continuing connection to land, waters & community and pay our respects to Elders past, present and emerging.

Supervision

Families are reminded that teachers are on duty before school from 8.45-9.00am and after school from 3.15 until 3.30pm. Children should not be unattended in the school grounds before or after these times.

Welcome to the 2023 school year!

Welcome back to all of our returning families and an especially warm welcome to our new Carlton Primary School families. We hope that your association with the school is a long and happy one and encourage your participation and interest in school activities. These newsletters will regularly be uploaded to SeeSaw, our school communication platform, and will be our way of sharing important information and upcoming events with you. Assemblies will take place every Monday afternoon from 2.50pm near the prep learning area on level one. We look forward to seeing families at our assemblies. Each week student awards will be presented and school issues and events discussed.

Camps, Sports and Excursions Fund

The CSEF helps eligible families to cover the costs of school trips, camps and sporting activities. If you have a valid means-tested concession card, such as a Veterans Affairs Gold Card, Centrelink Health Care Card or Pensioner Concession Card, or are a temporary foster parent, you may be eligible. There is also a special consideration category for asylum seeker and refugee families. Payment amounts this year are \$125 for eligible primary school students. Payments are made direct to the school to use towards expenses relating to camps, excursions and sporting activities for the benefit of your child. If you applied for CSEF through our school last year, you do not need to complete an application form this year, unless there has been a change in your family circumstances. If you would like to apply for the first time, please come to the school office and ask for an application form. You can also download the form, and find out more about the program and eligibility on the Department of Education and Training's Camps, Sports and Excursions Fund web page. Please return completed forms to the school.

Shade Sails Our new shade sails were installed today! Apart from looking great, they will provide additional shaded outdoor areas for children during outdoor classes and over break times.

Sunsmart Policy

In line with the Department of Education Sunsmart policy, all children at Carlton Primary are to wear broad brimmed hats when they are outside during school hours in Terms one & four. Children without hats will be required to stay in shaded areas. Hats are available for purchase from the office or department stores.

COVID Safety Update

The latest information is that schools will no longer be providing Rapid Antigen Tests (RAT's) to families this year. However, we do have excess supplies at school, so please ask at the office if you need some. We know that there is still Covid circulating in the community, so for the health and wellbeing of everyone, please keep your children at home if they are unwell and let us know if they test positive for Covid. We will continue to be using air purifiers in all learning areas this year and while the weather is fine, utilising our wonderful outdoor spaces as much as possible.

SeeSaw.

For our Prep families and other families new to the school, we will be supporting you to download and access Seesaw as soon as possible. Through SeeSaw you can access whole school newsletters and memos as well as individual classroom information. You will also get to see some pretty cute pictures of your children as they learn and play!

School times

Today was a great start with most students being at school by 9am. Well done! Thank you to all of those parents/carers who ensure that their children arrive at school, on time every morning.



When children arrive on time each morning they learn routines and the plans for the day. If children are away from school for any reason we ask you to let the school know. This can be through a phone message, a written note or by coming to the office in person. We ask that adults, rather than siblings, are informing us about any absences.

Education Department guidelines instruct schools to contact parents/carers on the day that a student is absent if we have not been given a reason for that absence. This will be done via a text message to you.

Have you changed phone number or address?

Please inform the office if either of these have changed since last year.



Carlton Primary
School
Cnr. Palmerston
and
Drummond streets
Carlton 3053

Phone: 9347
6022

Student Accident Insurance/Ambulance Cover Arrangements

I am required to remind families that the Department of Education **does not** provide personal accident insurance or ambulance cover for students. Parents and carers of students, who do not have accident insurance/ambulance cover, are responsible for all medical costs if their child is injured, including the cost of ambulance transportation to hospital if necessary. I have also been asked to remind families and staff that the Department of Education **does not** hold insurance for any personal property brought to schools and it has no capacity to pay for any loss or damage to such property. To put it simply, anything brought to school; from toys to mobile phones, is done so at the owners risk.

School Levy

This year the School Council has requested that the annual voluntary parent contribution remain at \$220 per student (\$55 per term). Our school does not have a booklist that we request families to purchase prior to school starting and the parent contribution assists us greatly in the provision of educational materials for your child. Payment plans can be arranged and an EFTPOS facility is available.

Staffing for 2023

We are feeling very fortunate, with the current recruitment stress in the education sector (and across all industries), that we have our full compliment of staff to start the school year. There will be three learning areas operating across the school this year. Two classes in the 4-6 area. 4/5 and 5/6, two classes in the 1-3 area and two classes in the Prep - 1 area. Teachers in these learning areas will plan together and co-teach. Flexible learning spaces, as we have at Carlton Primary, are in line with current educational best practice. These spaces provide opportunities for children to work in a range of groupings in collaborative and creative ways, better equipping them with the skills required in the 21st century.

Grade teachers and support staff for this year are as follows:

Prep-1 Learning Area— Anne Argiriou and Jess Adams with support from Francesca Mitchell, Riley Minns and Jacinta Speakman

1-3 Learning Area— Winter Dunstone and Kaytlin Beattie with support from Lucy Osbourne and Nora Basher

4-6 Learning Area— Cameron Wood and Meghan Hatherall with support from Lilly Van Dyk & Berhane Lewis

The following specialist programs will run across the school. Lilly will be teaching AUSLAN. Lucy will be teaching Science. Frankie will be teaching Art and Riley will be teaching Physical Education. A timetable of your child's week will be provided soon.

Jane Spiers is our business manager. Rebecca Harris is our student wellbeing co ordinator and Vanessa Basilone, our school based speech pathologist.

Khadra Omar and Marie Holmes will continue in their roles as parent & community engagement coordinators and will be joined this year by Cath Healey as the new Ourplace Carlton site manager.

Lauren Keim as Assistant Principal will join me in whole school leadership.

Carlton Primary is a vibrant school with a wonderfully supportive community, fantastic teachers and support staff. With our fabulous outdoor spaces and the City of Melbourne Family Services and Gowrie Early Learning Centre on site, 2023 should enable us to really enjoy all of the benefits of the "one stop shop" community hub that has been built here for the benefit of our community.

Alongside all of the dedicated and skilled teachers and support staff here, I am committed to working hard to make sure that your children are safe, happy and learning to the very best of their abilities.

Please feel free to come and see me if you have any concerns or issues at all throughout the year. I look forward to sharing a great year with you and your children in 2023!

Warm Regards

Julie Large
Principal